



固定式架空及門型起重機

OVERHEAD CRANES & GANTRY CRANES



冠亚机械工业(昆山)有限公司

GRAND ASIA MACHINERY INDUSTRY (KUNSHAN) CO., LTD.

江苏省昆山市经济技术开发区东部工业区金阳路4号
No.4 Jin Yang Rd, Eastern Industry Zone, Kanshan City, Jiangsu Province, China
Tel: +86-512-57672666~9 Fax: +86-512-57672999
Website: www.grandasia.cn
E-mail: info@grandasia.cn



- 2011年9月校正。第六版 #950161
- 所有规格、尺寸更新时，不另行通知，报价时以实际尺寸为主。
- 由于印刷特性之关系，制品颜色与实物略有差异，请谅解。
- Revision of August, 2011 (Edition No.6) #950150
- No further notice while sizes and dimensions update; Quotations are based on practical dimensions.
- Due to the printing factors, the color of the products is subject to minor deviation from the physical objects.



冠亚机械工业(昆山)有限公司
GRAND ASIA MACHINERY INDUSTRY (KUNSHAN) CO., LTD.

1. 开放式起重机

起重机构造主要包括卷扬装置，横行装置，卷扬有单一卷扬及主副卷扬两种。机框采结构钢焊接。保养维修考虑吊机面空间，及护栏设计。

2. 机梁

机梁系依据额定荷重、跨距尺寸、使用场合及级数，全面性考虑。

3. 驾驶室

依据场合使用驾驶室，一般为全密闭及半密闭二种，室内可指定排风机及冷气机。

4. 横行集电

横行集电方式一般采电缆滑车式。

1. CRAB TROLLEY UNIT

It contains up/down hoisting and left/right traversing building together in the unit. Sometimes has main and secondary hoisting in the unit. Welding of crab frame is using structure steel. A layout of crab trolley is based on available space for an easier maintenance and a safety handrail is included.

2. GIRDER

Girder's design is based on major standard requirements. It takes safe working load, girder span, application surrounding and class of usage into considerations.

3. OPERATOR CAB

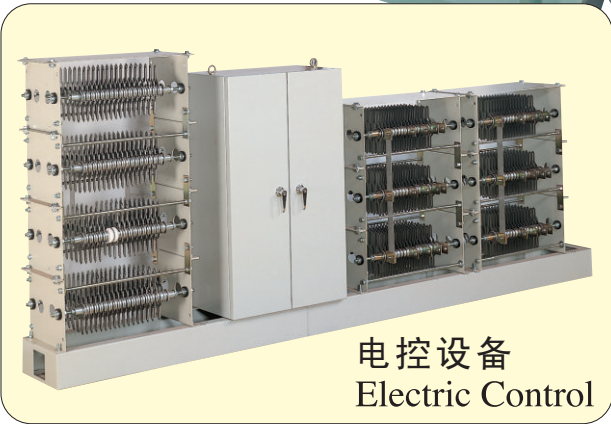
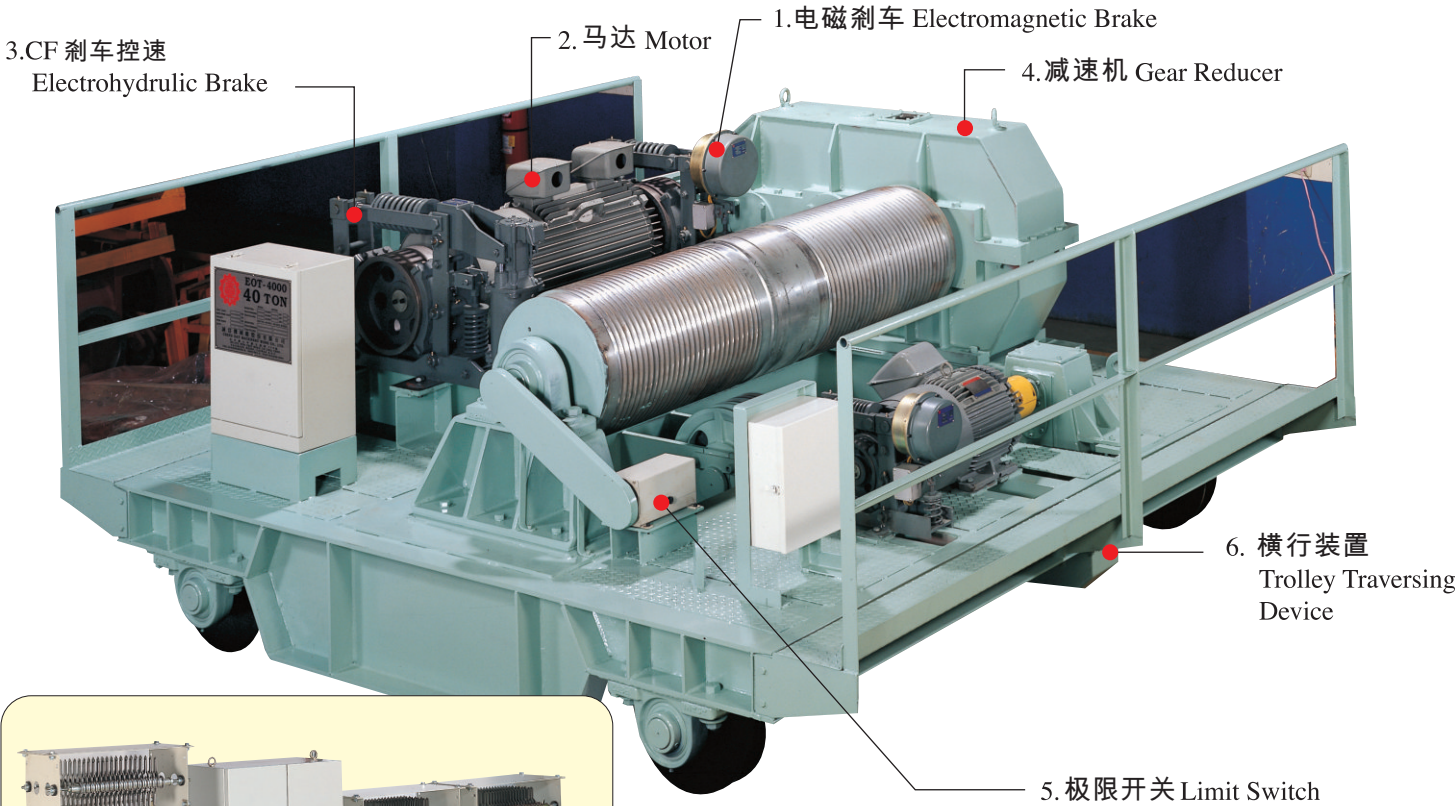
There are two types of cab. One is total enclosed type, the other is semi-enclosed type. Cab can be installed exhaust fan and/or air conditioner upon request.

4. ELECTRIC FEEDER FOR GIRDER

Generally, we use the flat cable festoon system.



绞盘（开放）式起重机构造 CRAB TROLLEY



- 1.电磁刹车**
安全式电磁刹车，马达运转时刹车开放，停止刹车作用，确保安全。
- 2.马达**
起重机马采起重机专用马达，IEC制定之国际标准尺寸，具国际间互换性，绝缘、耐热、耐湿性佳，安全及信赖性高，适用于工作频繁的环境。
- 3.CF刹车控速**
已由推力刹车作为卷下之控速，下放时，二段由马达二次侧控制油压机，作为低速下放之控速，与电磁刹车作为组合，更佳提高安全性及良好的操作性。
- 4.减速机**
齿轮依据起重机反复额定负荷设计，强度及耐磨性高，使用于高频度起重机使用。
- 5.极限开关**
防止过卷扬，及卷下时松索的情况。
- 6.横行装置**
横行传动组，包含刹车、马达、减速机及车轮组，机构模块化，保养容易。
- ★**IB控速**
高速刑大容量，卷下速度控制，使用涡电流控制器，后良好的低速控制性能。涡电流控制器无摩擦部分，使用寿命长。

- 1.ELECTRO MAGNETIC BRAKE SYSTEM**
By using fail safe brake system, when power on then brake off; power off then brake on at the same second.
- 2.MOTOR**
Hoisting motor is winding exclusive for a hoisting purpose. Frames are according to IEC specifications and interchangeable. At least "F" insulation class in winding, as such, the motor is always in good insulation, good heat-resistance and proper water protection. It is reliable and safe for high frequency applications.
- 3.FREQUENCY CHANGING SPEED CONTROL**
Using the electrohydraulic brake to control the initial lowering speed of hoist. The hydraulic action is controlled by the motor secondary winding. When power off, it works as a secondary brake to increase the brake's safety.
- 4.GEAR REDUCER**
All the gears are designed according to hoisting / crane forward + backward rating requirements, high strength and well anti-wearing. It is good for high frequency usage.
- 5.LIMIT SWITCH**
The up / down limit switch is available. It is screw type mechanical limit switch in harmony with drum's rotating cycle.
- 6.TROLLEY TRAVERSING**
The driving of trolley is modularized for an easy maintenance. It contains brake, motor, reducing gear box and wheel set.

★ **EDDY CURRENT SPEED CONTROL**
For a long lasting, a high speed and a large capacity lifting, we utilize the eddy current speed control for a better function of initial lowering speed control. Due to eddy current is without brake lining and no touching, it is long lasting and almost trouble free.

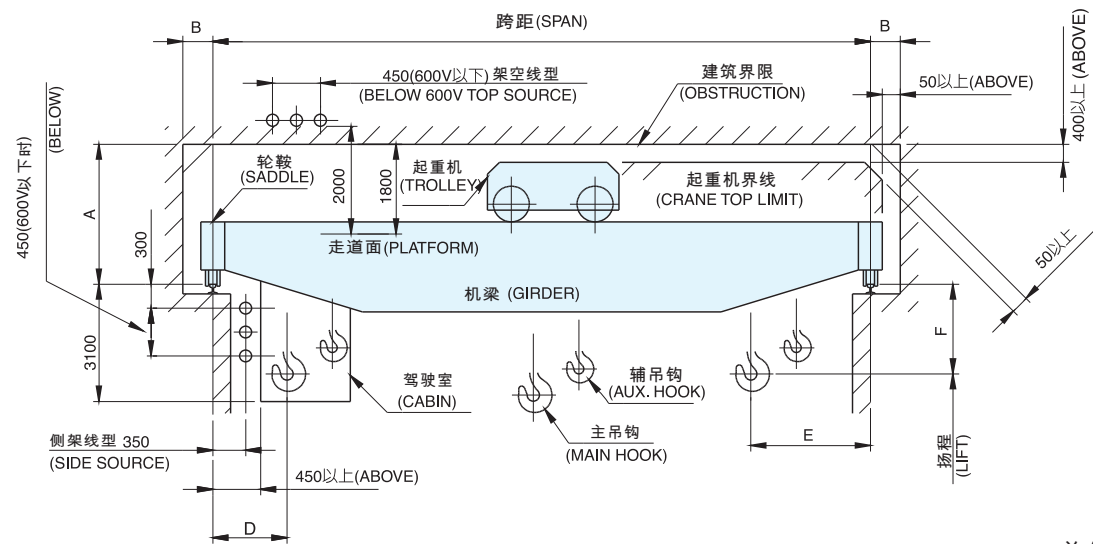
■ 起重机用途分类表 APPLICATION CHART

用 途 Application		起重机型式 Type of cranes	低速型 Low-speed Type	普通型 General-speed Type	高速型 High-speed Type
机械安装修理用 Machinery installation and repair.	发电厂、帮浦场合 Electric power plants Pump station		I		
一般制品搬运用 General products handling	机械工厂、制纸厂 Machine shops Paper mills			II	III
制钢压辗用 Steel manufacturing and rolling services.	发电炉 Electric furnace yards			II	III
钢材制品搬运用 Steel products handling.	辗压工厂、锻铸造工厂 Rolling mills Foundries and forge shops				III IV
制钢制铁厂用 Steel mills	厚钢板厂、钢棒厂 Slab yards Billet yards				III IV
高频度作业用 Extra-duty work	废铁厂、电磁铁场合 Scrap containers carriage Lift magnet work				IV

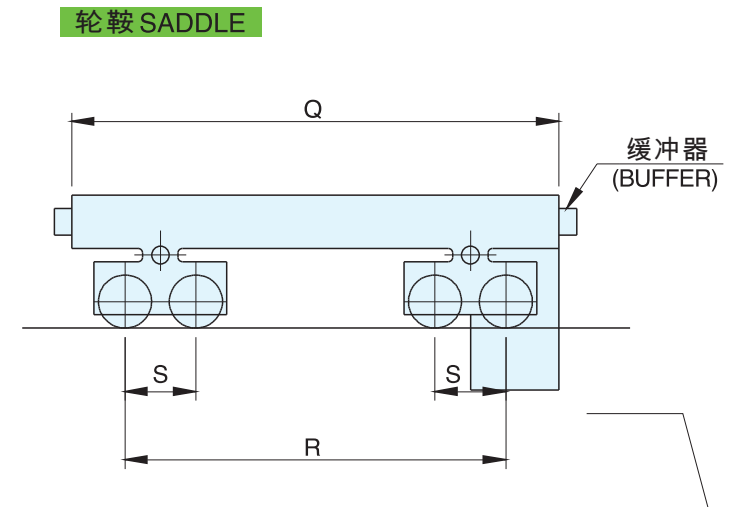
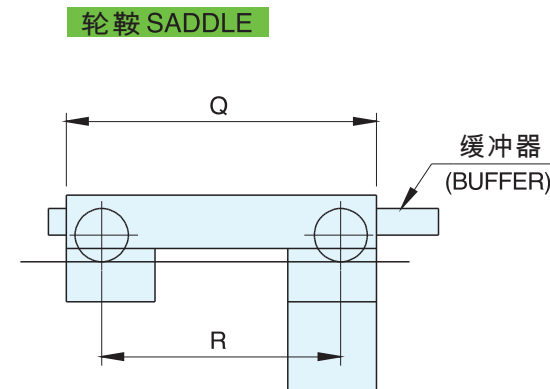
■ 起重机负荷率分配表 LOAD FACTOR CHART

Load cycles Duty factor		小 Light duty	中 Intermittent duty	大 Intensive duty	超大 Super-intensive duty
		长时间停用 之不规则使用 Irregular occasional use followed by long idle periods	间歇性频率 之规则使用 Regular use in intermittent operation	激烈频率 之规则使用 Regular use in continuous operation	激烈频率 之连续使用 Regular use in severe continuous operation
Load factor		10 ⁵ 未滿 under 10 ⁵	10 ⁵ -6x10 ⁵	6x10 ⁵ -2x10 ⁶	2x10 ⁶ 以上 over 2x10 ⁶
Light 輕	较少悬吊额定负荷 通常额定负荷1/3以下 Seldom lifts rated load, and normal loads of about one third of the rated load	I	I	II	III
Moderate 中	有时悬吊额定负荷 通常额定负荷1/3至2/3 Occasionally lifts load below rate load, loads between 1 / 3 and 2 / 3 of the rated load.	I	II	III	IV
Heavy 重	经常悬吊额定负荷跨距 Constantly lifts loads close to rated load	II	III	IV	IV

低速型 (LOW SPEED TYPE)

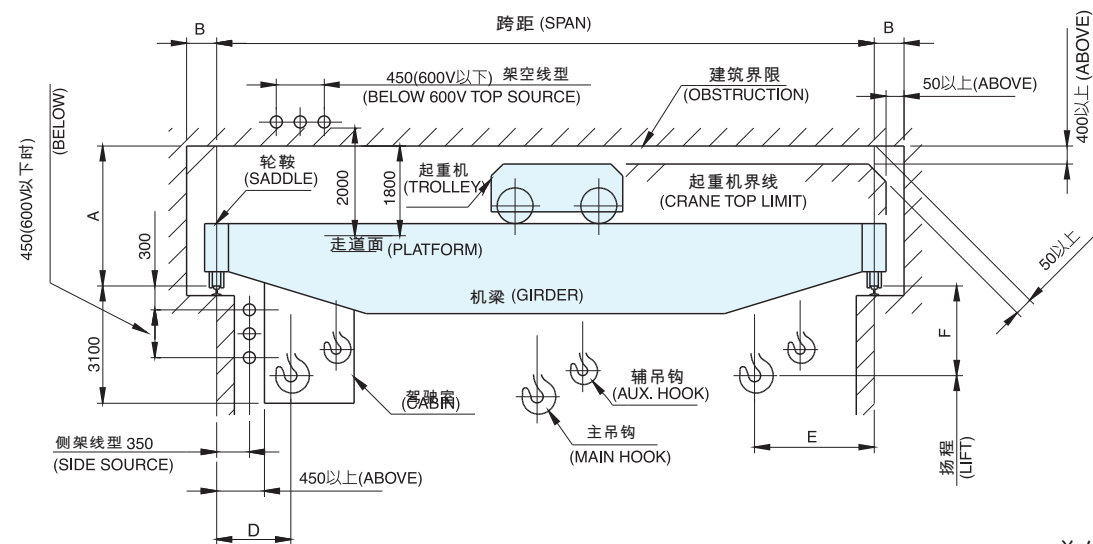


单位 (UNIT): mm

[illegible][illegible]

() 内尺寸表示無輔捲場合

普通型(COMMON SPEED TYPE)



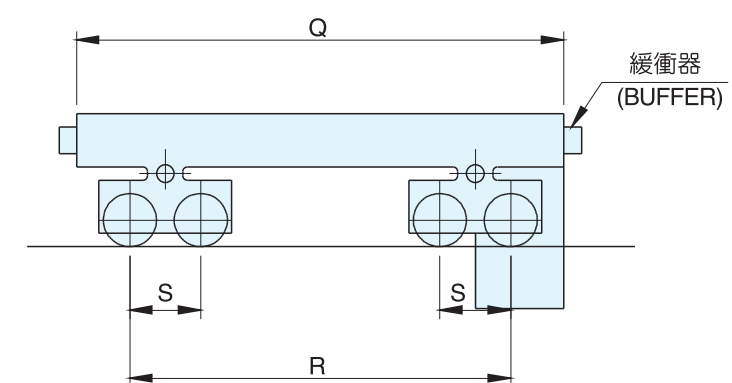
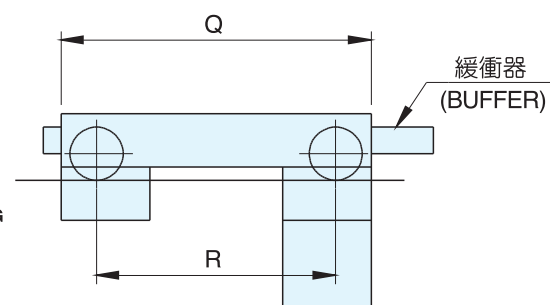
单位 (UNIT): mm

纵行
TRAVELLING

速度x电动机
SPEED MOTOR
(m/min)x(kw)

40x2.2

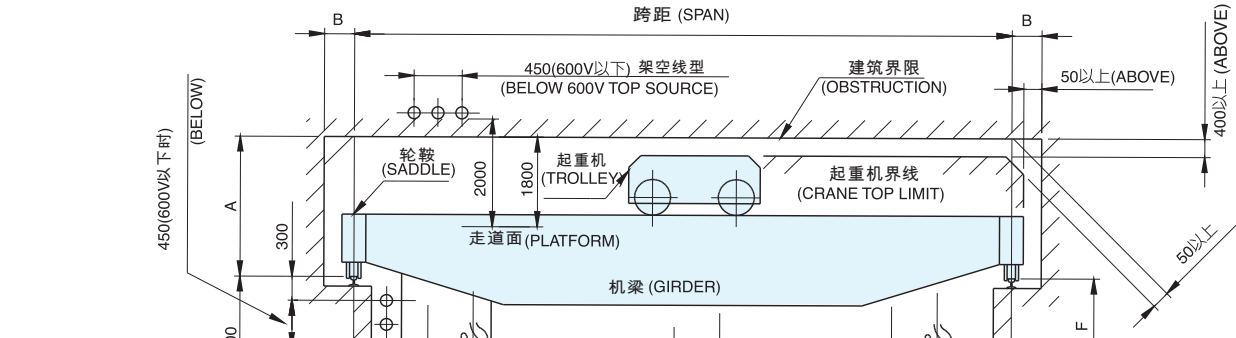
单位 (UNIT): mm

[illegible][illegible]

() 内尺寸表示無輔捲場合

高速型 (HIGH SPEED TYPE)

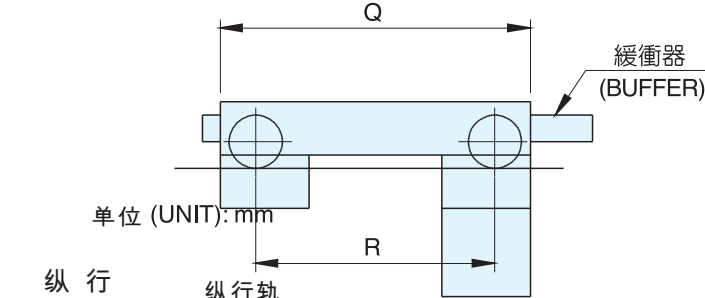
種類
SORT



額定負荷(t) CAPACITY		跨距 SPAN (m)		揚程 LIFT		主 卷 MAIN HOISTING	輔 卷 AUX. HOISTING	橫 行 TRAVERSING	縱 行 TRAVELLING
主 卷 MAIN	輔 卷 AUX.	超 過 ABOVE	以 下 BELOW	(m)		速度x電動機 SPEED MOTOR (m/min)x(kw)	速度x電動機 SPEED MOTOR (m/min)x(kw)	速度x電動機 SPEED MOTOR (m/min)x(kw)	速度x電動機 SPEED MOTOR (m/min)x(kw)

種類 SORT	額定負荷(t) CAPACITY		跨 距 SPAN (m)		揚 程 LIFT	主 捲 MAIN HOISTING	輔 捲 AUX. HOISTING	橫 行 TRAVERSING	直 行 TRAVELLING	直行軌 RAIL (最小) MIN. (kg/m)
	主捲 MAIN	輔捲 AUX.	超 過 ABOVE	以 下 BELOW	(m)	速度x電動機 SPEED MOTOR (m/min)x(kw)	速度x電動機 SPEED MOTOR (m/min)x(kw)	速度x電動機 SPEED MOTOR (m/min)x(kw)	速度x電動機 SPEED MOTOR (m/min)x(kw)	
高 速 型 (HIGH SPEED TYPE)	5	-	12.5	20	12	20x22	-	40x2.2 或 60x2.2	125x11	30
			20	25					125x15	
			25	32					125x15	
	7.5	-	12.5	20	12	16x30	-	40x2.2 或 60x3.7	125x15	30
			20	25					125x15	
			25	32					125x22	
	10	-	12.5	20	12	16x37	-	40x2.2 或 60x3.7	125x15	37
			20	25					125x22	
			25	32					125x22	
	15	无 NO 或 OR 5	12.5	20	10或16	12x45	20x22	40x3.7 或 60x5.5	125x22	37
			20	25					125x30	
			25	32					125x30	
	20	无 NO 或 OR 7.5	16	25	10或16	12x55	16x30	40x3.7 或 60x7.5	125x30	37
			25	32					125x37	
	25	无 NO 或 OR 7.5	16	25	10或16	12x75	16x30	40x5.5 或 60x7.5	125x37	73
			25	32					125x45	
	30	10	16	25	10或16	10x75	16x37	40x7.5 或 60x11	125x45	73
			25	32					125x45	
	40	15	16	25	10或16	10x90	12x45	40x7.5 或 60x11	125x55	73
			25	32					125x55	
	50	15	16	25	10或16	8x90	12x45	40x11	100x55	73
			25	32					100x55	
	60	20	20	32	10或16	8x110	12x55	40x11	100x55	73
	80	25	20	32	16或20	6.2x110	12x75	40x15	100x75	73
	100	30	20	32	16或20	5x110	10x75	30x15	80x75	73

輪鞍 SADDLE



縱 行
TRAVELLING

速度x电动机
SPEED MOTOR
(m/min)x(kw)

40x2.2

重 類 SORT	額定負荷(t) CAPACITY		跨 距 SPAN (m)		建築界限(mm) OBSTRUCTION		主鉤內行餘距, 上行餘距 (mm) HORIZONTAL, VERTICAL CLEARANCE OF HOOK TO RAIL			輪鞍(參考) SADDLE (REFERENCE)			車輪總數 WHEELS (參考) REFERENCE
	主捲 MAIN	輔捲 AUX.	超過 ABOVE	以下 BELOW	軌上空間 CLEARANCE (A) UP RAIL	側方空間 CLEARANCE (B) SIDE RAIL	駕駛室 端餘距 (D) CABIN SIDE	駕駛室 另端餘距 (E) OPPOSITE CABIN SIDE	上行餘距 (F) VERTICAL CLEARANCE	長度 LENGTH (Q)	軸間距離 DISTANCE BETWEEN WHEELS		
											(R)	(S)	
高 速 型 (HIGH SPEED TYPE)	5	-	12.5	20	2500	400	900	900	300	4100	3400	-	4
			20	25	2600				200	5200	4500		
			25	32	2700				100	6100	5400		
	7.5	-	12.5	20	2600	400	1000	1000	300	4400	3800	-	4
			20	25	2700				200	5300	4500		
			25	32	2800				100	6200	5400		
	10	-	12.5	20	2700	400	1100	1200	300	5000	4100	-	4
			20	25	2800				200	5400	4500		
			25	32	2900				100	6400	5500		
15	無 NO 或 OR 5	12.5	20	2800	500	1400	1600 (1300)	700	5200	4200	-	4	
		20	25	2900				600	5400	4500			
		25	32	3000				500	6400	5500			
20	無 NO 或 OR 7.5	16	25	2900	500	1500	1700 (1400)	800	6000	5000	-	4	
		25	32	3000				700	6500	5500			
25	無 NO 或 OR 7.5	16	25	3000	560	1600	1700 (1400)	900	6000	5000	-	4	
		25	32	3100				800	6500	5500			
30	10	16	25	3100	560	1900	1900	900	6200	5000	-	4	
		25	32	3200				800	6500	5500			
40	15	16	25	3200	560 600	1900	2000	1100	6500	5000	-	4	
		25	32	3300				1000	6800	5800			
50	15	16	25	3600	600	2000	2100	900	6800	5600	-	4	
		25	32	4000				500	6800	5800	800	8	
60	20	20	32	4300	600	2100	2200	500	7000	6000	800	8	
80	25	20	32	4500	600	2300	2400	500	7500	6400	900	8	
100	30	20	32	4700	600	2400	2500	500	8000	6800	1000	8	

() 內尺寸表示無輔捲場合